

Milwaukee[®]
Nothing but **HEAVY DUTY**.[®]



DATACOMM EXPANSION – PUNCHDOWN TOOLS

NEW PRODUCT LAUNCH



DATACOMM EXPANSION – PUNCHDOWN TOOLS

LAUNCH OVERVIEW

NEW SKUs

Item #	Description
48-22-2164	Impact Punchdown Tool
48-22-2902	9IN1 Punchdown Multibit Screwdriver
48-22-8101	Twisted Pair Install Kit



EXISTING SKU

Item #	Description
48-22-2165	Punchdown Tool with Extended Blade



PREORDERS OPEN NOW! SHIPPING 2/1/2024.

APPLICATIONS

Punchdown tools are used to ‘punch down’ or **terminate ethernet** (twisted pair) cabling in 110 & 66 blocks, as well as keystone jacks.

Ethernet Cabling is used with:

- Structured Network Cabling
- Data Centers
- Building Automation Systems
- Access Control Systems
- Security Cameras (CCTV)
- Local Area Networks (LAN)
- Voice over Internet Protocol (VOIP)
- Internet of Things (IOT)
- Power over Ethernet (POE)



*See Slides 19-21
For Full Breakdown

PRIMARY USER



Low Voltage Technician

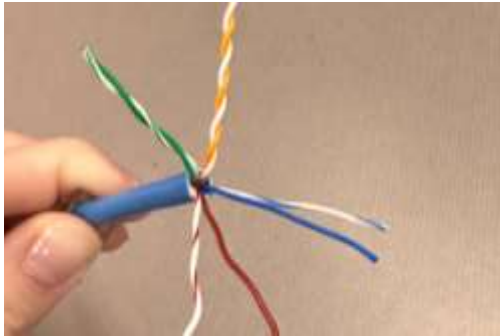
KEY COMPETITION



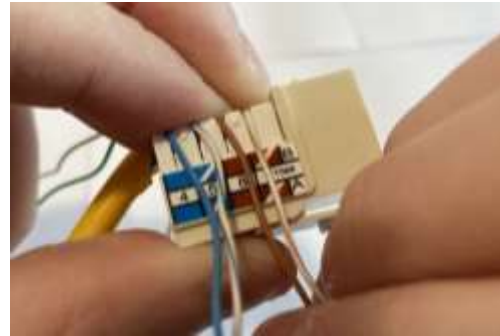
FLUKE



TERMINATION PROCESS – JACKS



Untwist & separate all twisted pair conductors.



Align conductors with color code on jack or block & **insert** into slots.



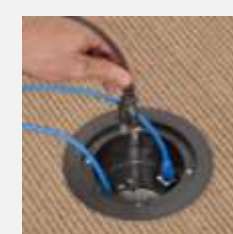
Terminate each conductor with punchdown tool.

BLOCKS/PANELS vs. KEYSTONE JACKS

110 and 66 blocks & patch panels and keystone jacks are key components in networking, but they serve different purposes.



110 and 66 Blocks and Patch Panels are **larger** termination blocks used for connecting **multiple cables**, typically in **data closets**.



Keystone jacks are **smaller** connectors used for terminating **individual cables**. Fit into **wall plates**, floor boxes, and patch panels.



DATACOMM EXPANSION – PUNCHDOWN TOOLS

PRODUCT WALKAROUNDS

IMPACT PUNCHDOWN TOOL

48-22-2164

NON-SLIP GRIPS

For all day use

ADJUSTABLE HI/LO IMPACT INTENSITY

QUICK RELEASE BLADE STORAGE

SPRING-LOADED PUNCHES

For consistent terminations

110/66 BLADE

Terminates 110
and 66 punchdown
blocks

TWIST AND LOCK BLADE MECHANISM



BUILT-IN PICK AND SPUDGER IN TOOL BODY



9IN1 PUNCHDOWN MULTIBIT SCREWDRIVER

48-22-2902

WRENCH READY BOLSTER

For additional leverage and torque

9-IN-1

Dual-Sided Punchdown Blade,
4 driver bits, and 3 nut drivers

CUSHION GRIP ANTI-PEEL DESIGN



LOOP MAKER

INCLUDED SIZES

Punchdown:



110, 66

Slotted:



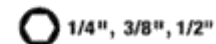
3/16", 1/4"

Phillips:



PH1, PH2

Nut Driver:



1/4", 3/8", 1/2"





DATACOMM EXPANSION – PUNCHDOWN TOOLS

BREADTH OF LINE



48-22-2165
EXISTING



48-22-2164
NEW



48-22-2902
NEW

MAIN APPLICATION	Punching down 110 & 66 Blocks / Patch Panels and Keystone Jacks	Punching down 110 & 66 Blocks / Patch Panels and Keystone Jacks	Punching down 110 & 66 Blocks / Patch Panels and Keystone Jacks
IMPACTING FEATURE <i>SPRING LOADED TO PROVIDE LOW EFFORT TERMINATIONS</i>	Yes	Yes	No
COMPATIBLE W/EXTENDED BLADE	Yes	Yes	No
EXTENDED BLADE INCLUDED <i>FOR BEST IN CLASS ACCESS</i>	Yes	No	No
INTEGRATED LED LIGHT <i>FOR BEST IN CLASS VISIBILITY</i>	Yes	No	No
BUILT IN PICK & SPUDGER <i>TO SEPARATE INDIVIDUAL WIRES</i>	No	Yes	No
QUICK RELEASE BLADE STORAGE <i>PREVENTS 110/66 BLADE DULLING</i>	No	Yes	No
9 UNIQUE BITS, BLADES, NUT DRIVERS	No	No	Yes
RETAIL	\$79.97	\$39.97	\$27.97

FEATURE SET DRIVES TOOL SELECTION



IMPACT PUNCHDOWN TOOL ONE SLIDER

Pre-Order Date: **1/4/2024**

Show Online: **1/8/2024**

Launch Ship Date: **2/1/2024**

110/66 BLADE



- **110/66 Blade**
 - Provides precise, accurate terminations

NON-SLIP GRIPS



- **Non-Slip Grips**
 - For all day use without hand fatigue

BLADE STORAGE



- **Quick Release Blade Storage**
 - Easily store 110/66 blade to prevent blade dulling

- **Built-in Pick and Spudger**
 - Separate individual wires and manipulate/press down wires

- **Adjustable Hi/Lo Impact Intensity**



ITEM #	DESCRIPTION	IMAP
48-22-2164	Impact Punchdown Tool	\$39.97



9IN1 PUNCHDOWN MULTIBIT SCREWDRIVER ONE SLIDER

Pre-Order Date: **1/4/2024**

Show Online: **1/8/2024**

Launch Ship Date: **2/1/2024**



- **9IN1**
- **Dual-Sided Punchdown Blade**
 - Punches 110 and 66 blocks and jacks
- **4 Unique Driver Bits**
 - P1, P2, SL 3/16, SL 1/4
- **3 Unique Nut Drivers**
 - 1/4", 3/8", 1/2"
- **Cushion Grip Handle**
 - Better grip and control when applying torque
- **Wrench Ready Bolster for Additional Leverage**



INCLUDED SIZES

- | | |
|------------|------------------|
| Punchdown: | Slotted: |
| 110, 66 | 3/16", 1/4" |
| Phillips: | Nut Driver: |
| PH1, PH2 | 1/4", 3/8", 1/2" |

ITEM #	DESCRIPTION	IMAP
48-22-2902	9IN1 Punchdown Multi-Bit Screwdriver	\$27.97

Pre-Order Date: **1/4/2024**

Show Online: **1/8/2024**

Launch Ship Date: **2/1/2024**



48-22-3076



48-22-2164



48-22-3065

■ **Includes:**

- 48-22-3076 Ratcheting Modular Crimper & Stripper
- 48-22-2164 Impact Punchdown Tool
- 48-22-3065 UTP Stripper
- 48-22-8108 Zippered Bag



ITEM #	DESCRIPTION	IMAP
48-22-8101	Twisted Pair Install Kit	\$79.97



DATAComm EXPANSION – PUNCHDOWN TOOLS

FREQUENTLY ASKED QUESTIONS

Will the existing punchdown tool (48-22-2165) be discontinued?

No, the new punchdown tools (48-22-2164 and 48-22-2902) are an expansion of our DataComm category.

When will products start shipping?

The punchdown tools & kit will start shipping on 2/1/24.

What bits and drivers does the 9IN1 Punchdown Multibit Screwdriver (48-22-2902) have?

The tool includes a 110 Punchdown Blade, 66 Punchdown Blade, PH1, PH2, SL 3/16", SL 1/4", 1/4" Nut Driver, 3/8" Nut Driver, and 1/2" Nut Driver.

Do the Milwaukee® Punchdown Tools have a warranty?

Yes, all Milwaukee® Punchdown Tools are covered by our Limited Lifetime Warranty.

Are replacement punchdown blades available?

Yes, the Extended Reach Punchdown Blade (48-22-2166) and Punchdown Blade (48-22-2167) are available.